



Equity + Consumer Power Panel

September 15, 2023

Austin, TX

Presented by: Andrew Robison

andrew@tepri.org



TEPRI advances equitable solutions for affordable, reliable, and clean energy so all people can thrive.

1

Affordable

.....

Decrease energy burdens for low-to-moderate income houses

2

Reliable

.....

Improve energy resilience, address energy access, and respond to energy outages

3

Clean

.....

Increase parity in clean energy technology access and adoption.

Our Strategy



Conduct Research

on the energy priorities of people with lower incomes



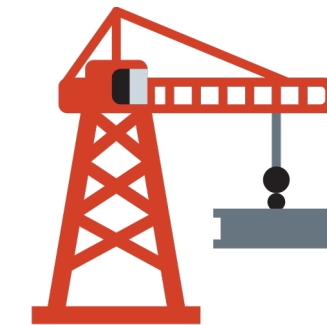
Develop Tools

to advance lasting energy solutions



Build a Strong Network

including community and energy stakeholders



Pilot Innovative Models

to demonstrate technological developments

Defining Energy Equity

Allocating resources and opportunities to create equally **affordable, accessible, sustainable, and resilient** energy outcomes for all community members where:



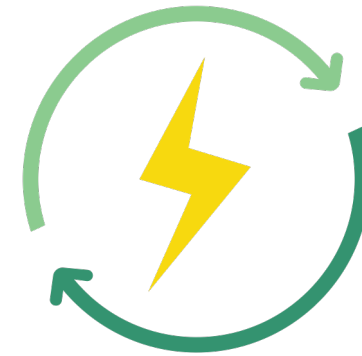
Affordable

means energy costs are less than 6% of household income



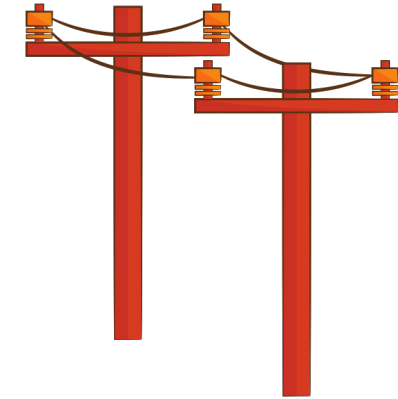
Accessible

means energy services are readily available in the amount needed, of the kind needed, and when needed



Sustainable

means the energy being used benefits - or at least minimizes harm to - people, planet, and prosperity

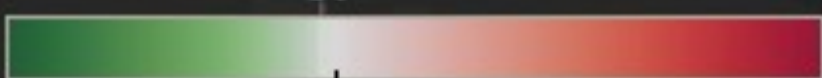


Resilient

means energy services are minimally disrupted and disruptions are quickly resolved with minimal cost

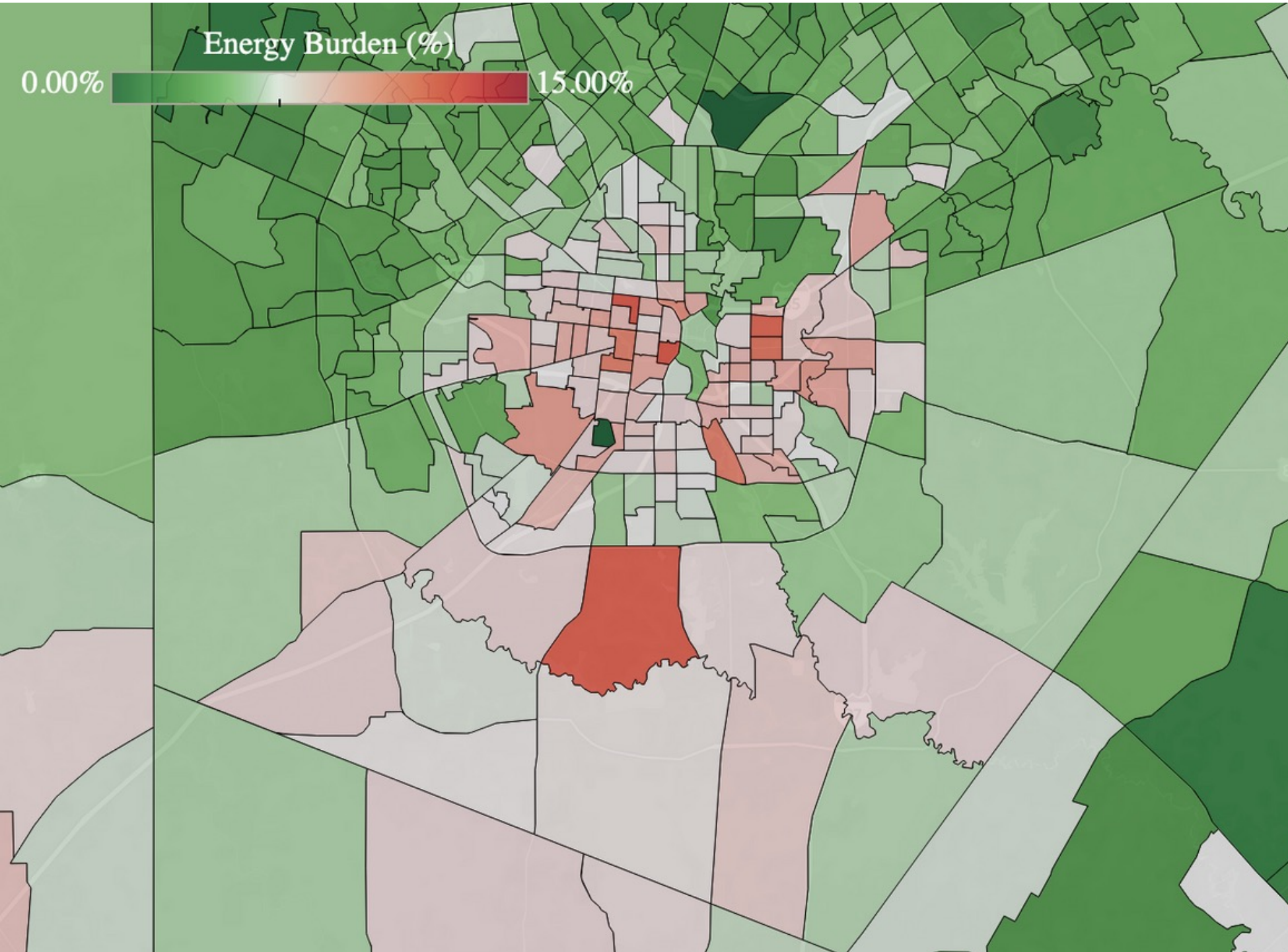
Energy Burden (%)

0.00%

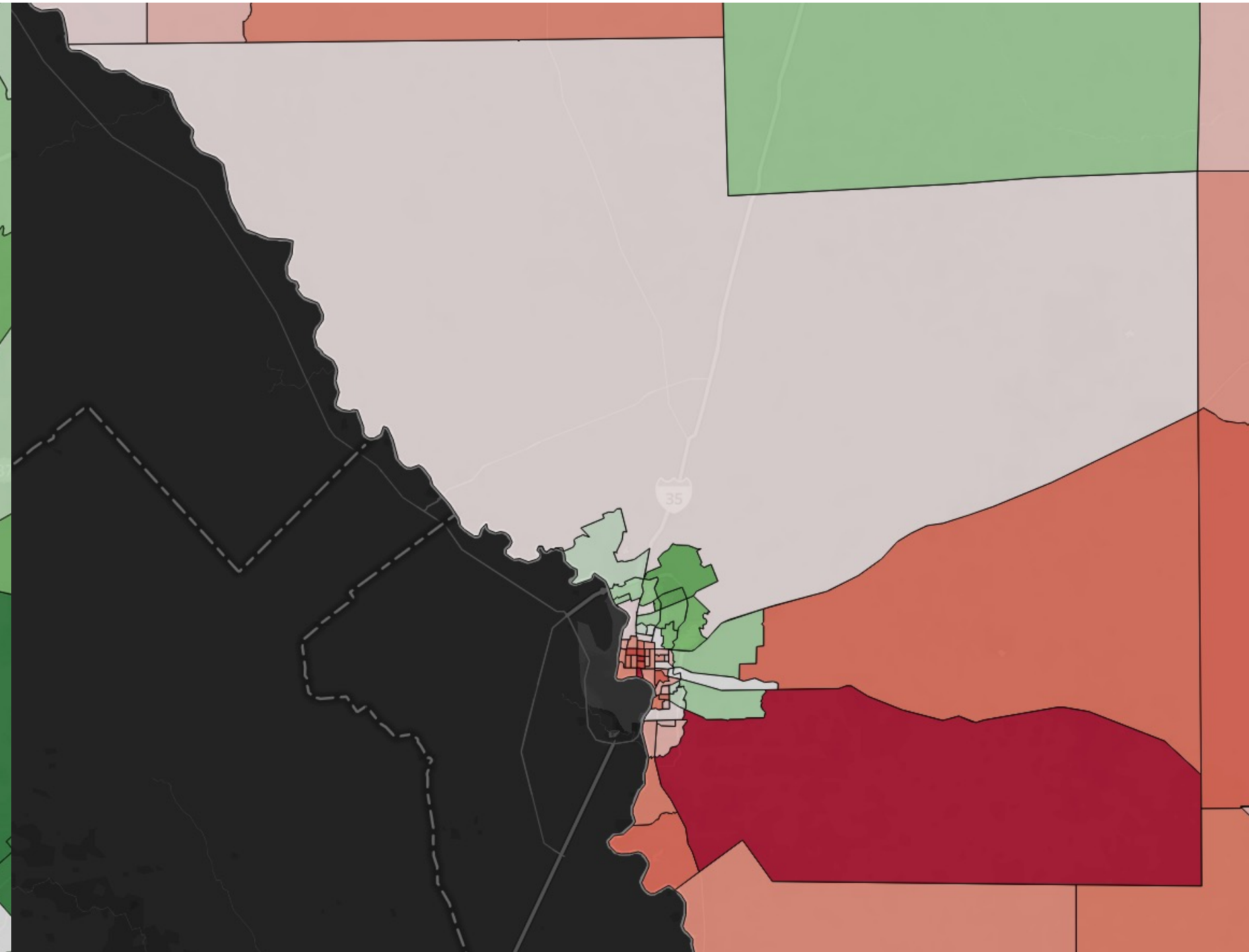


15.00%

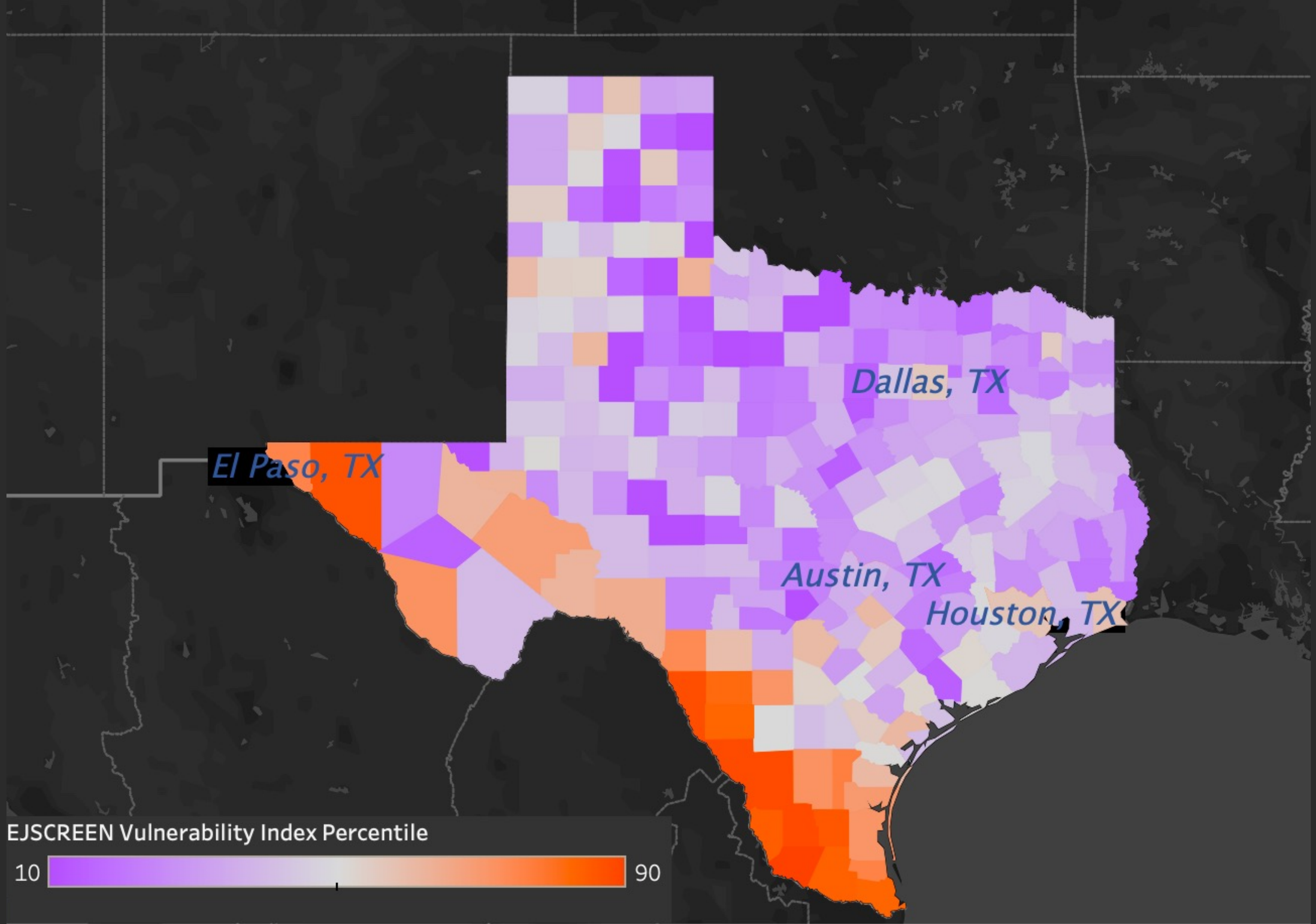
Energy Burdens by Census Tract



Bexar County
San Antonio and
surrounding area

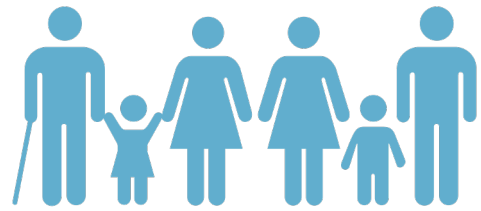


Webb County
Laredo and surrounding
area



Community Voices in Energy Survey (CVES)

People-Centered Research



**6,520
respondents**

The survey received 7,970 total responses, which was narrowed down to 6,520 after further analysis



**Dec 2022 -
Mar 2023**

Survey response collection took place over three months and utilized multiple pools of survey respondents



**13 Regions
Across Texas**

Responses to the survey were evaluated by region, conforming to TDHCA's 13 uniform service regions



**Thorough
Analysis**

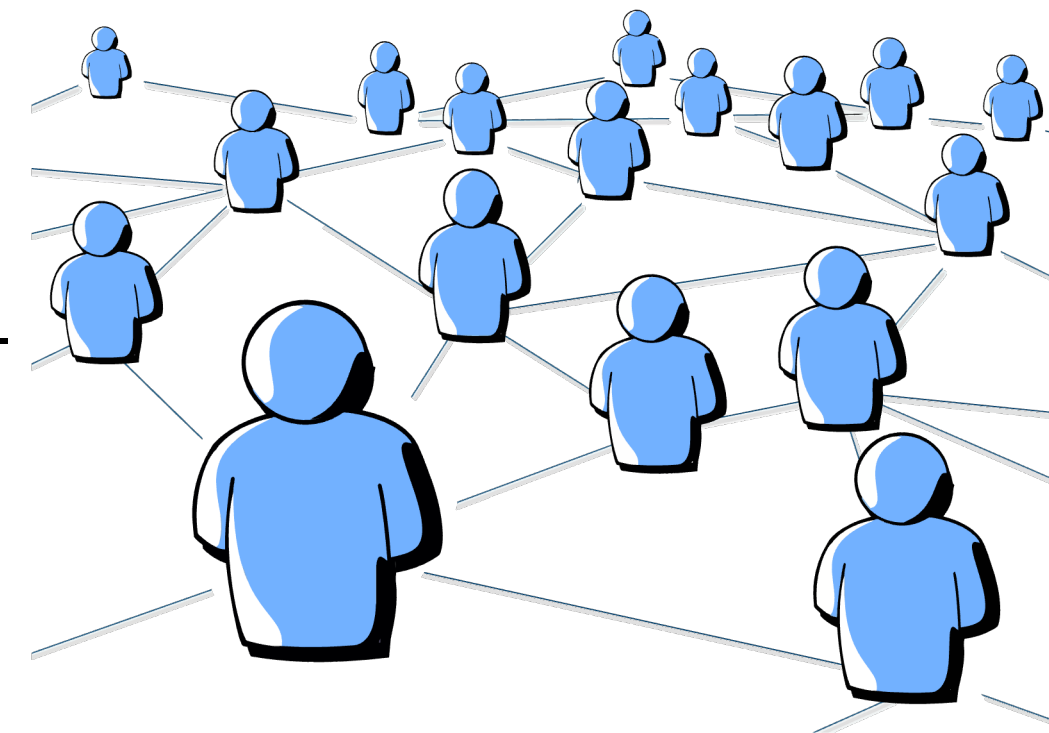
Survey analysis includes:

- Descriptive statistics
- Cross tabs
- Geospatial analysis
- Regression analysis

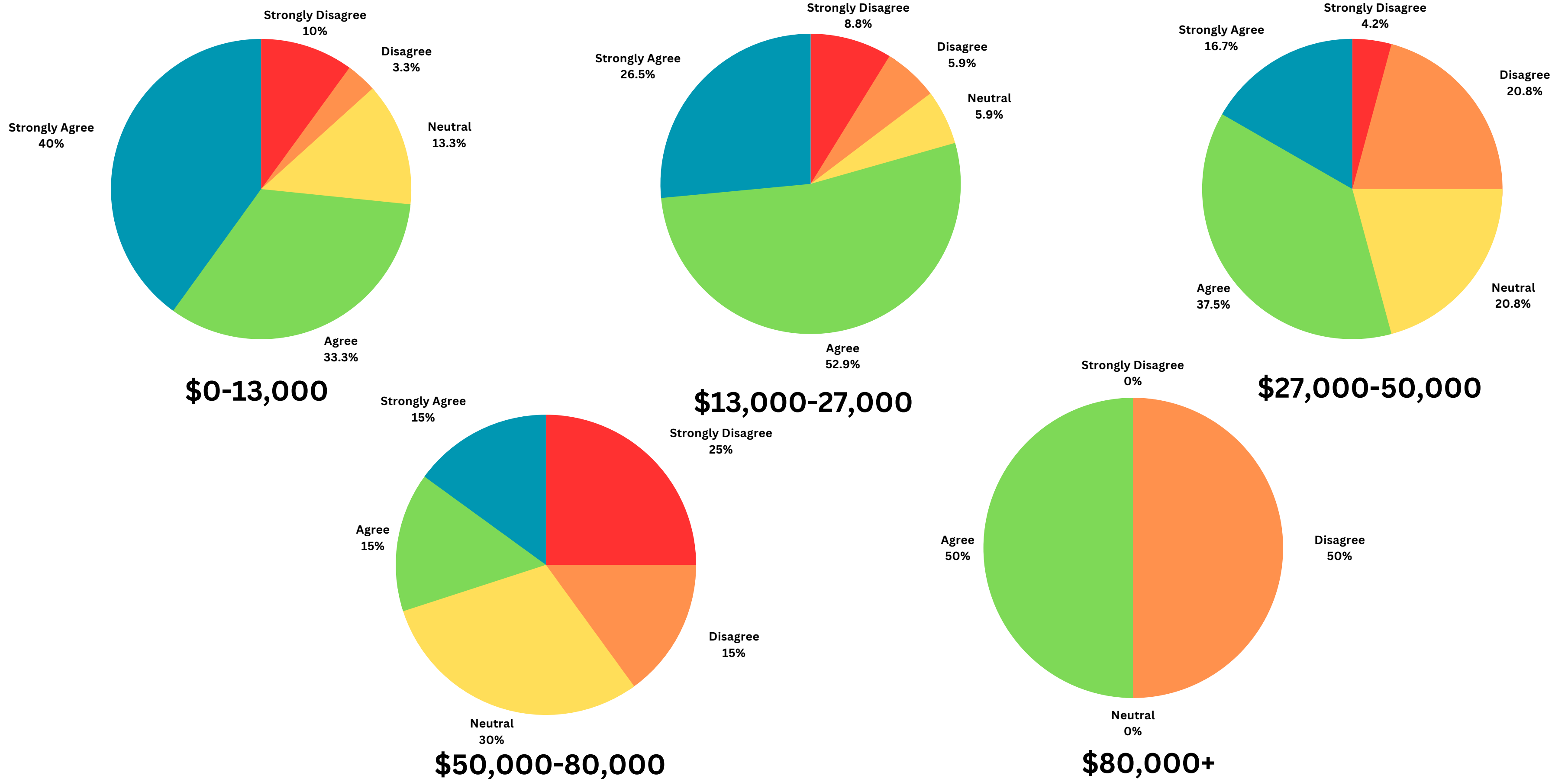
Community Voices in Energy Survey (CVES)

Main Objectives

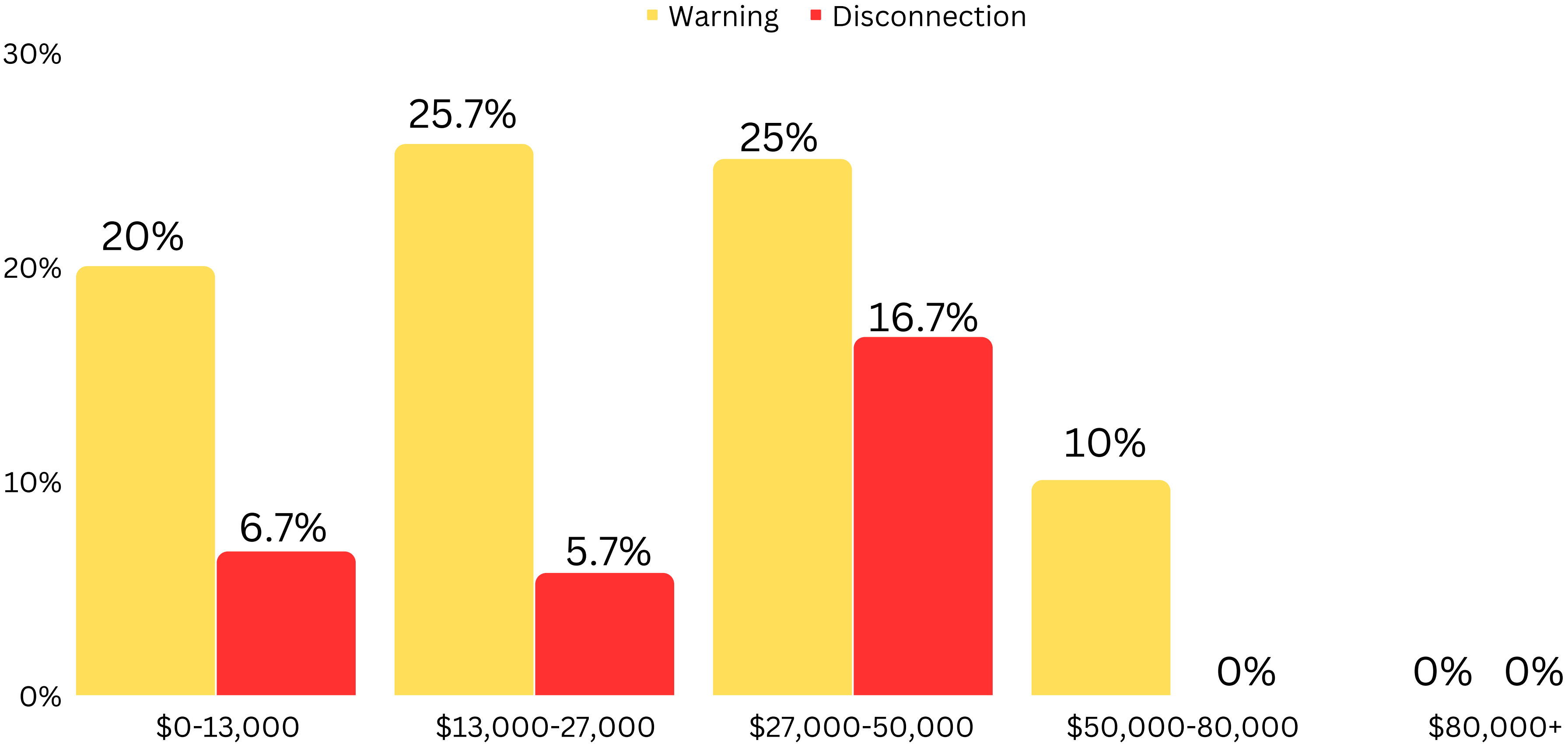
- Understand the **energy challenges and needs** of the households who contend with low and moderate incomes (LMI)
- Identify the **disproportionate experiences** of LMI households as it relates to energy burden and energy insecurity
- Use the data to help stakeholders (such as utilities and community-based organizations) **make better and informed decisions** on the development of solutions to improve the energy needs of Texans.
- Maintain an **updated database on community needs, perspectives, and challenges** to effectively deploy clean, reliable, and affordable energy that benefits households that contend with low incomes.



"I have to cut back on spending on other household/essential goods to afford my monthly energy bills."



Disconnections and disconnection warnings in the last twelve months



Electricity should be... (which preference was ranked first)

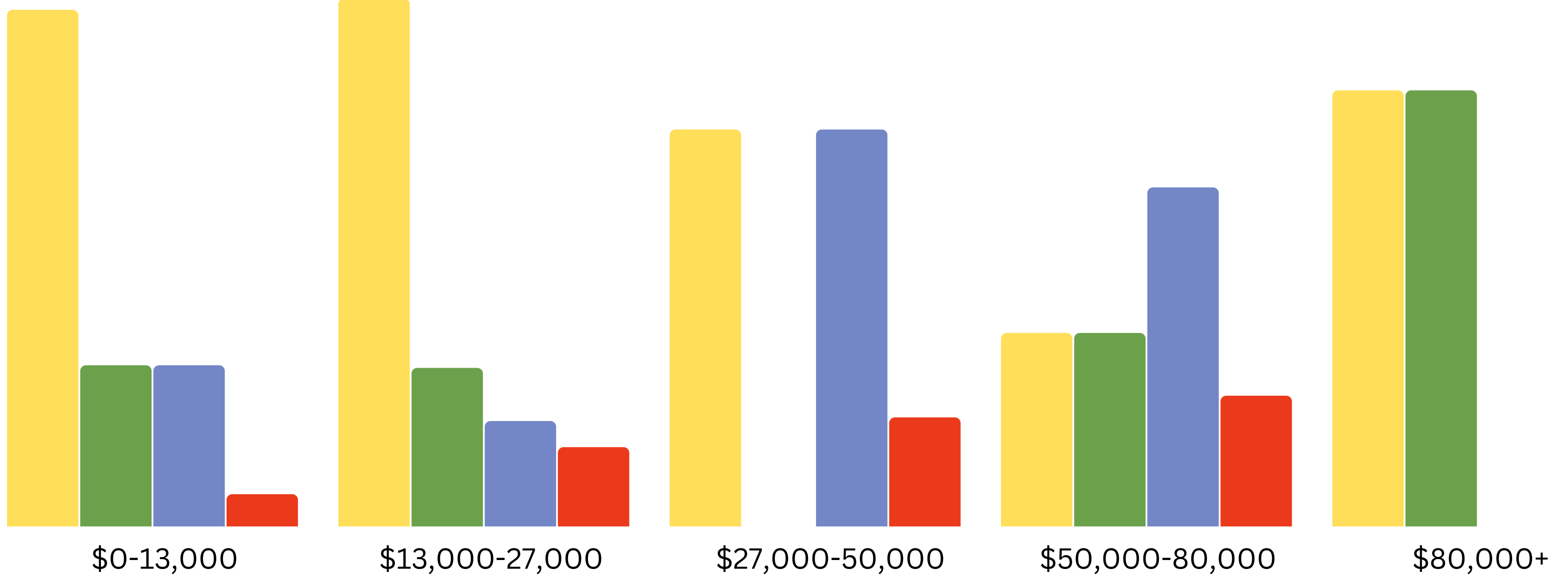
- Affordable to everyone
- Clean & Environmentally Friendly
- Reliable and not go out during a storm
- Enough to meet my needs

75%

50%

25%

0%



Energy concerns impact all parts of life



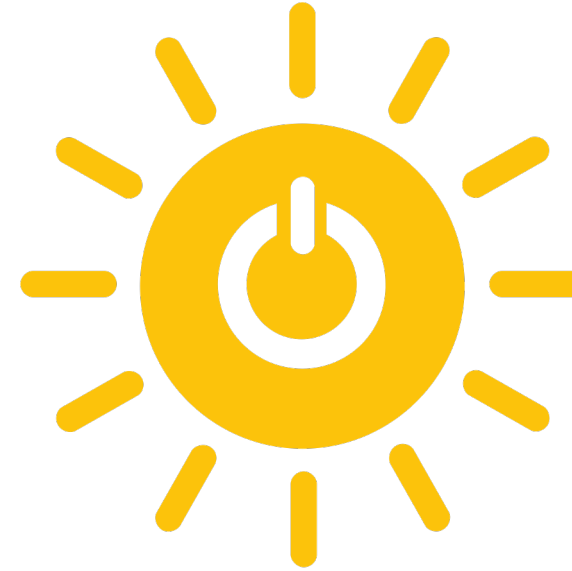
Food



Other household expenses



Clothing



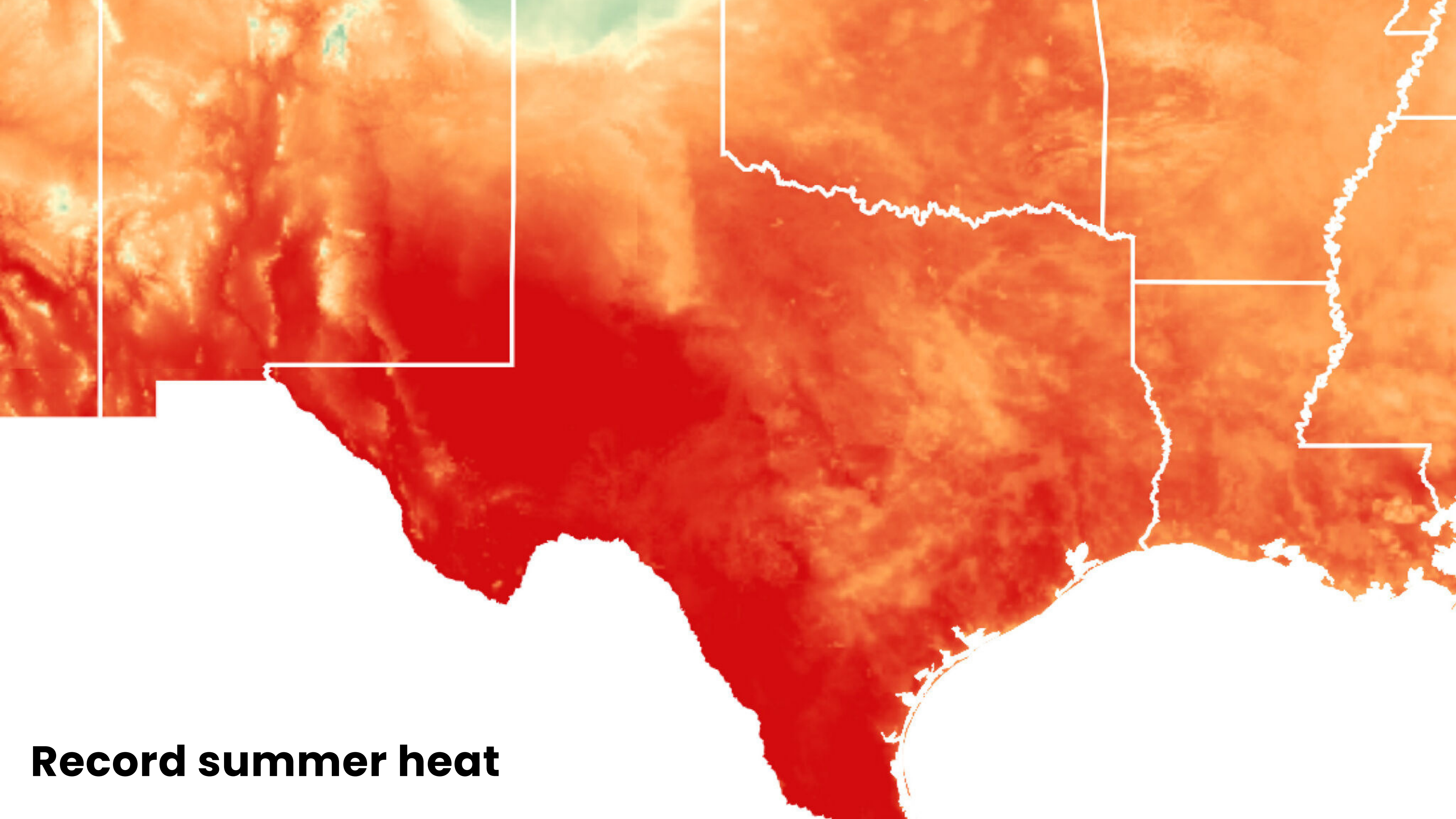
Housing stock quality and home value



Health



Comfort and well-being



Record summer heat

**CVES Reports
coming October
2023 - Sign up for
our newsletter.**



Contact

Andrew Robison
Texas Energy Poverty Research Institute
andrew@tepri.org

